

PRODUCTS : MACHINE TOOLS ACCESSORIES

ART 114 : Drill Machine Vice



Size		Packing per Carton	Weight per Carton
(mm)	(inches)	(Pcs.)	(Kgs.)
80	3	8	21
100	4	4	25
150	6	2	21



ART 289 : Drill Press Machine Vice



Size		Packing per Carton	Weight per Carton
(mm)	(inches)	(Pcs.)	(Kgs.)
80	3	6	23
100	4	4	25
150	6	2	22



ART 113 : Unigrip Machine Vice



Size		Packing per Carton	Weight per Carton
(mm)	(inches)	(Pcs.)	(Kgs.)
80	3	8	21
100	4	6	23
200	8	6	21



ART 177 : Angular Machine Vice (Tilting & Swivelling)



Size		Packing per Carton	Weight per Carton
(mm)	(inches)	(Pcs.)	(Kgs.)
100	4	1	22
150	6	1	48
200	8	1	105



ART 178 : Milling Machine Vice



Size		Packing per Carton	Weight per Carton
(mm)	(inches)	(Pcs.)	(Kgs.)
100	4	1	20
125	5	1	32
150	6	1	43
200	8	1	75
250	10	1	144
300	12	1	210



ART 179 : Angle Lock Machine Vice, Swivel Base



Size		Packing per Carton	Weight per Carton
(mm)	(inches)	(Pcs.)	(Kgs.)
100	4	1	26
125	5	1	33
150	6	1	56
200	8	1	114



ART 174 : Rotary Milling Table



Size		Packing per Carton	Weight per Carton
(mm)	(inches)	(Pcs.)	(Kgs.)
200	8	1	29
250	10	1	55
300	12	1	85
375	15	1	108
450	18	1	162
530	21	1	205
600	24	1	267



ART 175 : Compound Sliding Table



Size		Packing per Carton	Weight per Carton
(mm)	(inches)	(Pcs.)	(Kgs.)
150 x 150	6 x 6	1	16
200 x 200	8 x 8	1	24
250 x 250	10 x 10	1	32
200 x 300	12 x 8	1	44
300 x 300	12 x 12	1	48
300 x 500	12 x 20	1	110



ART 192 : Tilting Table



Size		Packing per Carton	Weight per Carton
(mm)	(inches)	(Pcs.)	(Kgs.)
125 x 175	5 x 7	1	12
175 x 250	7 x 10	1	26
250 x 375	10 x 15	1	69



ART 171 : 4 Jaw Independent Lathe Chuck



Size		Packing per Carton	Weight per Carton
(mm)	(inches)	(Pcs.)	(Kgs.)
100	4	10	33
150	6	6	52
200	8	2	34
250	10	2	45
300	12	1	38
350	14	1	46
400	16	1	62
450	18	1	80
500	20	1	93



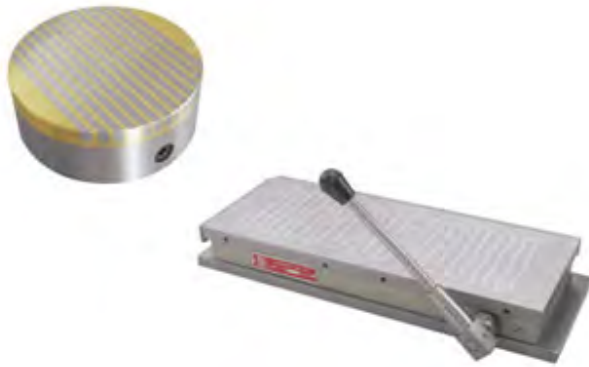
ART 173 : 3 Jaw Self Centering Lathe Chuck



Size		Packing per Carton	Weight per Carton
(mm)	(inches)	(Pcs.)	(Kgs.)
100	4	4	32
150	6	2	26
200	8	2	38
250	10	1	40
300	12	1	46



ART 193 : Permanent Magnetic Chucks



Large Size Available

Size of Chucks (L X W)		Packing per Case
(mm)	(inches)	(Pcs.)
150 x 75	6 x 3	1
200 x 100	8 x 4	1
250 x 125	10 x 5	1
300 x 150	12 x 6	1
300 x 200	12 x 8	1
350 x 150	14 x 6	1
400 x 150	16 x 6	1
450 x 150	18 x 6	1
450 x 200	18 x 8	1
500 x 200	20 x 8	1

Size of Chucks (OD.) Packing per Case

(mm)	(inches)	(Pcs.)
100	4	2
125	5	2
150	6	1
200	8	1
225	9	1
250	10	1
300	12	1
350	14	1
400	16	1
450	18	1



ART 172 : Drill Chuck, Key Type



Size		Packing per Carton	Weight per Carton
(mm)	(inches)	(Pcs.)	(Kgs.)
6	1/4	48	22
10	3/8	48	22
13	1/2	24	20
16	5/8	20	28
18	3/4	12	20
25	1	10	24



ART 303 : Heavy Duty Geared Slotting Machine



Size	Rotary Table	Cutting Speed of Ram Stroke per Minute	Motor	Nett Weight
(mm)	(mm)	(mm)	(hp)	(Kgs.)
200	275	64 - 90	1	700
250	340	26 - 36	2	1000
300	500	26 - 36	3	1500

Separate detailed catalogue available

